



## Background

- Implements a collection of machine learning algorithms for solving data mining problems
- Provides tools for data pre-processing, classification, regression, clustering, association rules
- Offers visualization of data and two GUIs named as WEKA Explorer and WEKA Experimenter

## Selected Algorithms

- C4.5 decision tree learner
- Naïve Bayesian learner
- Multi-response linear regression, logistic regression
- Support Vector Machine (linear, polynomial, radial basis function kernels)

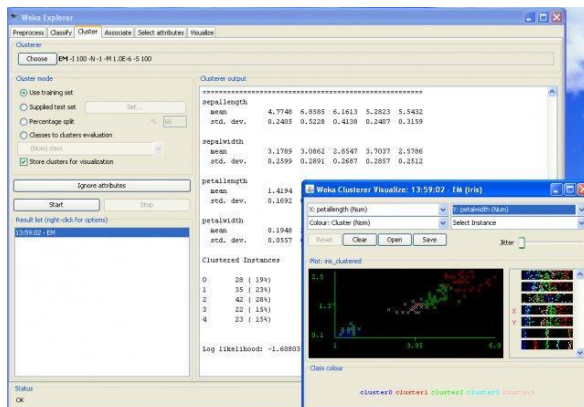
## Datasets & Data Files

- Implemented as data set 'Instance' class with attributes of different types: nominal (one of a predefined list of values), numeric (a real/integer number), or string (characters as "text")
- Handling data files with ARFF files (external representation of instance class): header with attribute types and data as comma-separated list
- Use WEKA.FILTERS package in order to transform datasets in the pre-processing phase: e.g. removing/adding attributes, resampling dataset, removing examples

## Technical Short Description

- Written in Java ( runs on most platforms ), GNU General Public License
- Apply directly to a dataset as a tool (command-line client, GUIs)
- Embed as library called from Java code

## Tool Snapshot (from [4])



## Download and availability

- WEKA - Version 3.6.10
- Download @ Sourceforge [4]

## References

- [1] WEKA Home page with Documentation, Online: <http://www.cs.waikato.ac.nz/ml/weka/>
- [2] Mark Hall, Eibe Frank, Geoffrey Holmes, Bernhard Pfahringer, Peter Reutemann, Ian H. Witten (2009); *The WEKA Data Mining Software: An Update*; SIGKDD Explorations, Volume 11, Issue 1.
- [3] WEKA Primer on Wiki, Online: <http://weka.wikispaces.com/Primer>
- [4] WEKA @ SourceForge, Online: <http://sourceforge.net/projects/weka/>